

DREAM
TOWER

Own your dream

BOLD.
ICONIC.
LUXURIOUS.





DREAM TOWER

OWN YOUR DREAM

The Dream Tower Residences, ideally located just steps from the beautiful azure coastline of Limassol, take island-living to a whole new level. Surrounded by five-star luxury hotels, designer boutiques, first-rate restaurants and cafés, residents can take advantage of all that Limassol has to offer. From the sandy, Blue Flag beaches to the bustling city life for which Limassol is famous, there is no better place to truly realise your Mediterranean dream.







KEY FACTS

27 FLOORS

78 APARTMENTS

57-274 M2 INTERNAL AREA

8-173 M2 VERANDAS

5 SHARED SKY-GARDENS

1 OBSERVATION TERRACE

50M TO THE SEA

SITUATED IN AG.TYCHONAS

60KM TO LARNACA AIRPORT

70KM TO PAPHOS AIRPORT

14K M2 PLOT

DELIVERED: Q4 2024



CYPRUS

ANCIENT. MYTHICAL. MAGICAL.

A Mediterranean dreamscape, Cyprus is an island profuse with sunshine, hospitality and the good life. Its golden coastline gives way to emerald mountains, and its rich ancient history mingles seamlessly with the contemporary. Harmoniously multicultural and refreshingly multidimensional, the welcome is always warm. From the business professional to the family unit, from the adventurer to the artist, all are charmed by this beguiling destination.

DREAM TOWER





LIMASSOL

THE CITY THAT DREAMS BIG

Cosmopolitan and progressive, Limassol has a unique character that is anchored in its history as the island's heart of shipping, and a vibe of costal luxury that is intertwined with a premium lifestyle. Its effervescent character always remains one step ahead professionally, culturally and aesthetically – delivering nothing but first rate. The home of modern retail, big business and the island's first superyacht marina and casino resort, there has never been a better time to invest in Limassol.





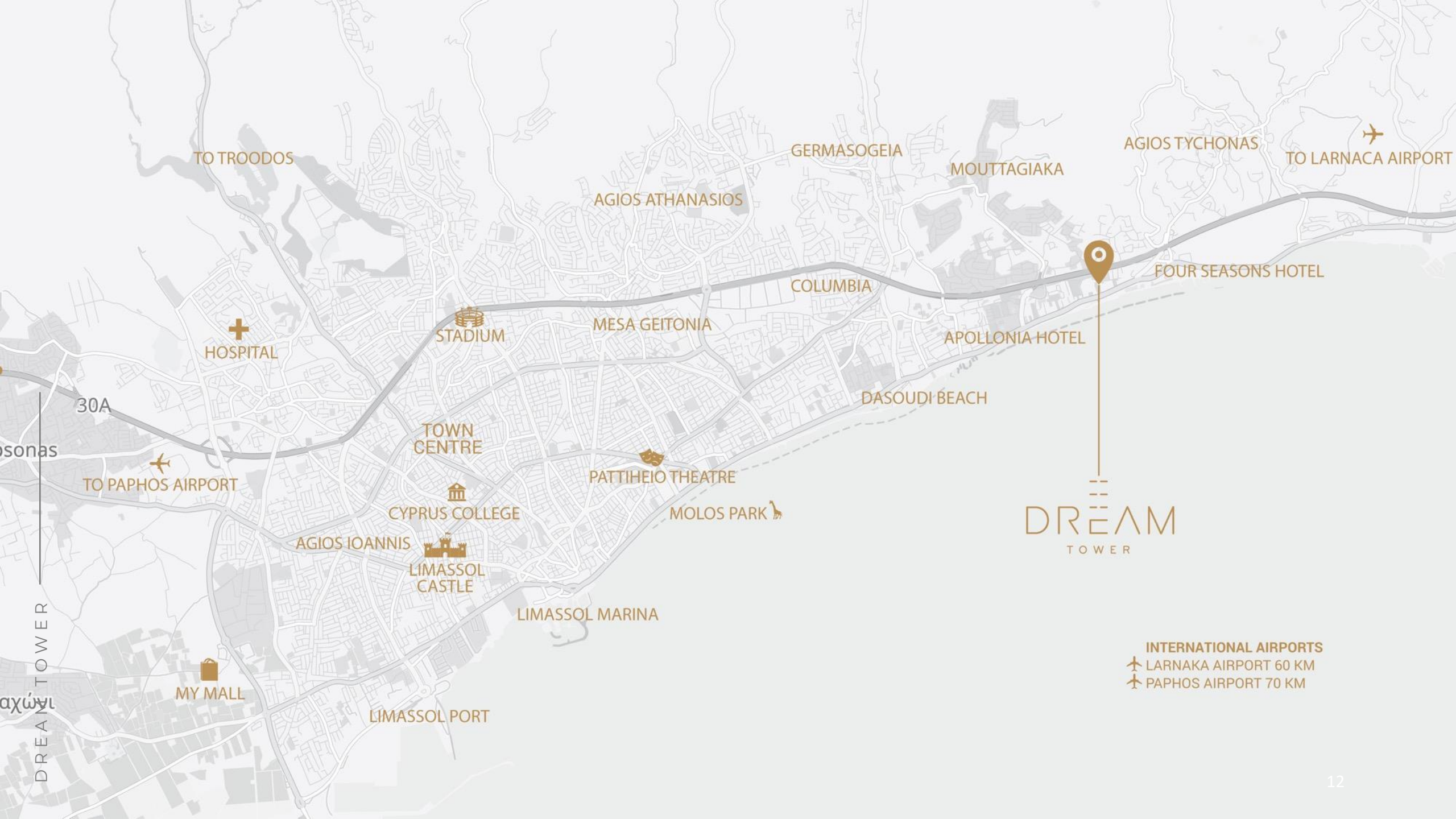
THE NEIGHBORHOOD

DREAM TOWER



AN EXCLUSIVE ADDRESS

The location of Dream Tower Residences puts you right in the middle of one of Limassol's most elite neighbourhoods, with the best of the city - and the rest of the island - within easy reach. Surrounded by a vast selection of prime venues, including five star hotels, high-end dining establishments, golden beaches, fascinating historical sites and excellent international private schools, residents are truly spoilt for choice. The island's two international airports, in Paphos and Larnaca, are just a short drive away.



TO TROODOS

AGIOS ATHANASIOS

GERMASOGEIA

MOUTTAGIAKA

AGIOS TYCHONAS

TO LARNACA AIRPORT

FOUR SEASONS HOTEL

APOLLONIA HOTEL

DASOUDI BEACH

COLUMBIA

MESA GEITONIA

STADIUM

HOSPITAL

30A

TO PAPHOS AIRPORT

TOWN CENTRE

CYPRUS COLLEGE

AGIOS IOANNIS

LIMASSOL CASTLE

LIMASSOL MARINA

LIMASSOL PORT

MY MALL

PATTIHEIO THEATRE

MOLOS PARK

DREAM
TOWER

INTERNATIONAL AIRPORTS

✈ LARNAKA AIRPORT 60 KM

✈ PAPHOS AIRPORT 70 KM

THE BUILDING

SKY-HIGH LUXURY

Bold, iconic and luxurious, the Dream Tower has raised the bar and set new standards in urban architecture in Cyprus. This state-of-the-art, 27-storey residential tower is the third tallest in Limassol and offers a platinum level of island living to discerning residents seeking quality, beauty, and exclusivity. A proudly modern building that rises high into the clouds, and adorned with the lush, tropical greenery of its soaring Sky Gardens, Dream Tower epitomises the true meaning of living the Mediterranean dream, complete with sweeping views of the coastline and beyond.





DREAM TOWER

THE AMENITIES

WORLD CLASS COMFORTS

The warmth of home and the comforts of a world-class hotel are what make your Dream Tower Residence a dream come true. Residents have access to hotel-grade facilities, including an outdoor swimming pool, open-air hot tub and children's pool with a deck area and gazebo lounges, and an open-air terrace. Fitness enthusiasts can make use of the fitness centre, tennis courts and jogging route, as well as the sauna and steam room and massage room. Exclusive, residents-only areas include a residents' lounge, co-working centre, sky gardens and private event room.

DREAM TOWER



A SYMPHONY OF ARCHITECTURE & AMBIANCE,
CRAFTED FOR THE DISCERNING FEW.

OUTDOOR AMENITIES

Swimming pool

Children's pool

Sundeck with lounges

Yoga terrace

Tennis court

Outdoor lounge

Children's playground

Shared sky-gardens

Observation terrace



INDOOR AMENITIES

Heated indoor pool

Jacuzzi area

Sauna

Steam room

Massage room

Fitness centre

Residents lounge

Co-working area

Private event area





DREAM TOWER

THE SERVICES

IMPECCABLE SERVICE

Residents of Dream Tower have access to a team of highly skilled professionals who will cater to their every request. 24/7 front desk and security personnel are on hand to manage your day-to-day needs, and residents also have access to storage rooms and e-car charging stations. A range of additional services are available upon request, whether you need travel itineraries planned out or restaurant reservations made, housekeeping and maintenance for your home, or pet-sitting, car washing, and babysitting. Health and wellness services, including personal training and massage treatments, can also be arranged.

THE RESIDENCES

ASTONISHING SEA VIEWS

Each exquisitely designed Dream Tower residence is perfectly positioned to allow uninterrupted views. Featuring one, two and three-bedroom apartments, as well as four-bedroom duplexes, Dream Tower residences combine premium aesthetics with elevated comfort and high functionality. Large, floor to ceiling windows allow an abundance of natural light to stream in, with the sapphire blue waters acting as a picture-perfect backdrop against the warm elements of the interiors.







THE RESIDENCES

CONTEMPORARY & COMFORTABLE

Residences are constructed with generous proportions, using top quality building materials and finished to the highest of standards, boasting top-of-the-line appliances and technologies. They feature comfortable, open plan living areas that extend onto large, ample balconies with glass railings that serve up beautiful views. Stylish bedrooms provide a tranquil haven, thoughtfully decorated with a warm, cosy approach. Kitchens are bright and spacious, offering a well-equipped workspace.



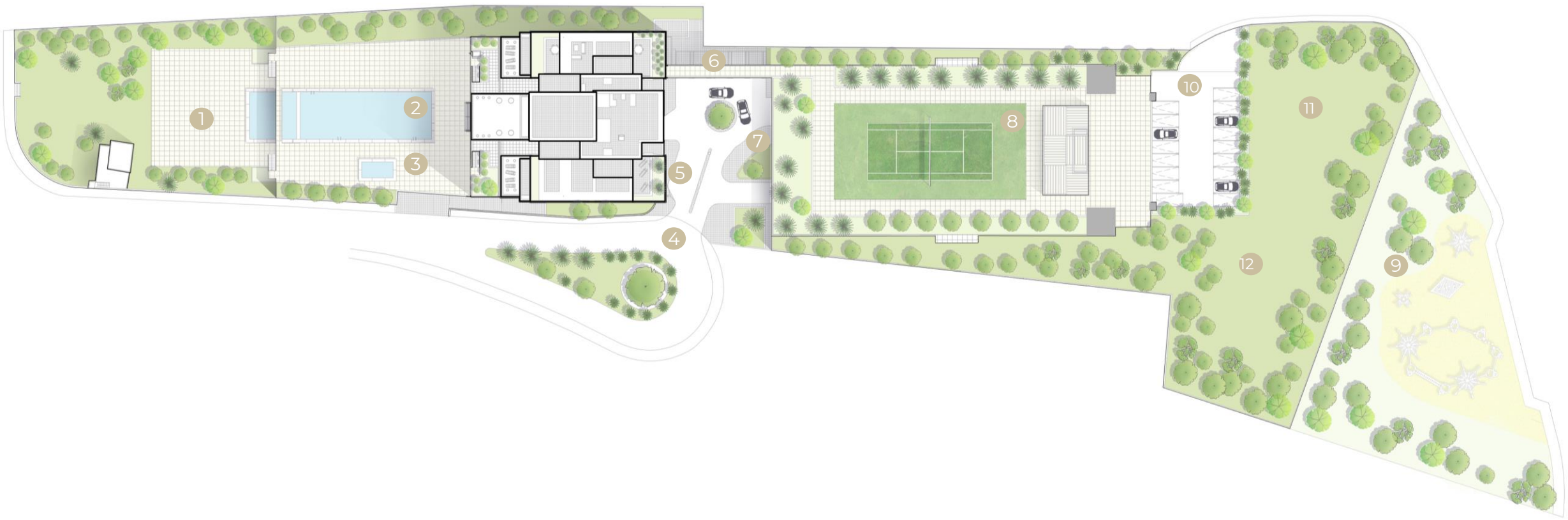




FLOOR PLANS



MASTER PLAN



1	Pool deck
2	Swimming pool
3	Children's pool

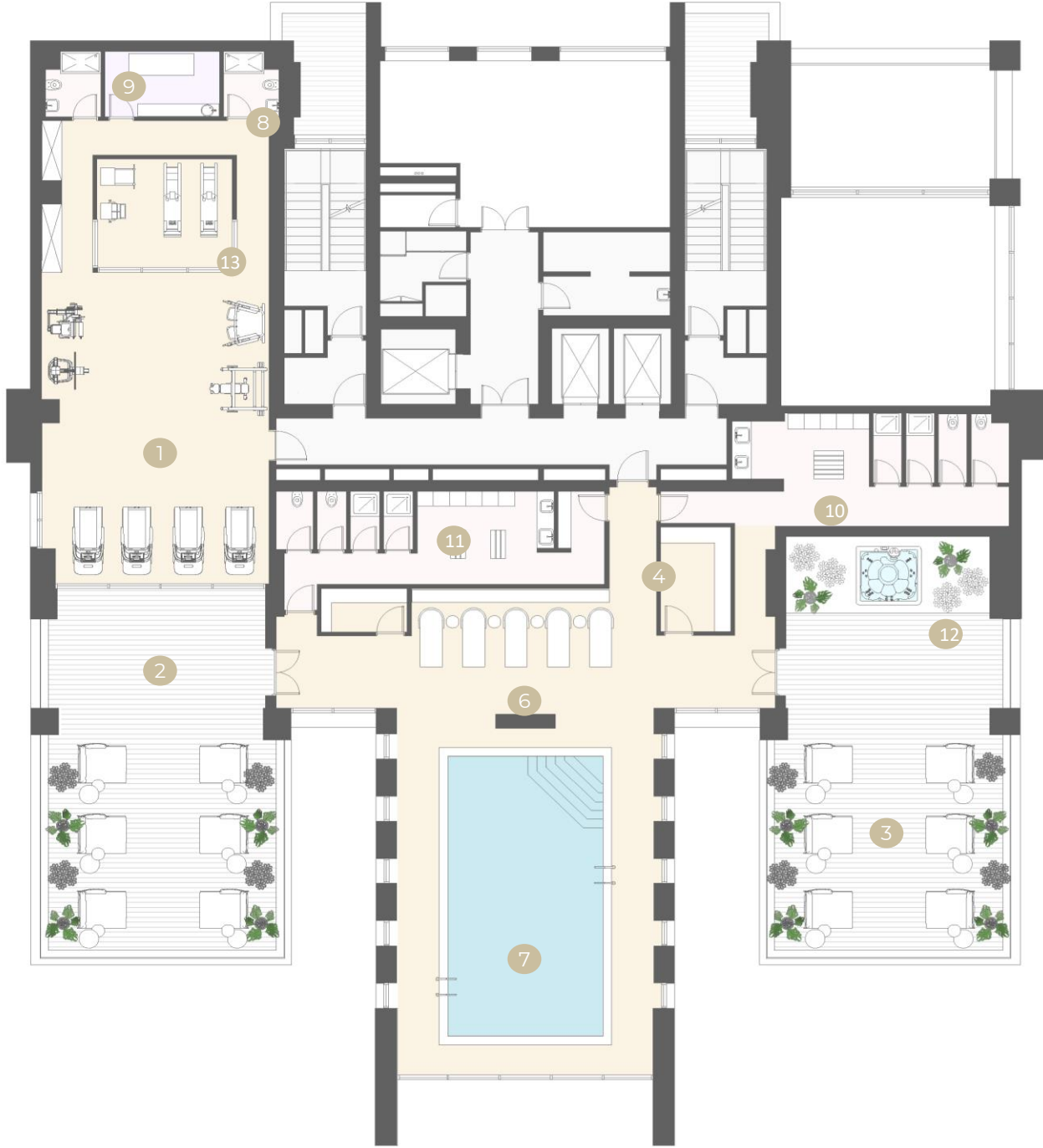
4	Building entrance
5	Main entrance
6	Elevated walkway

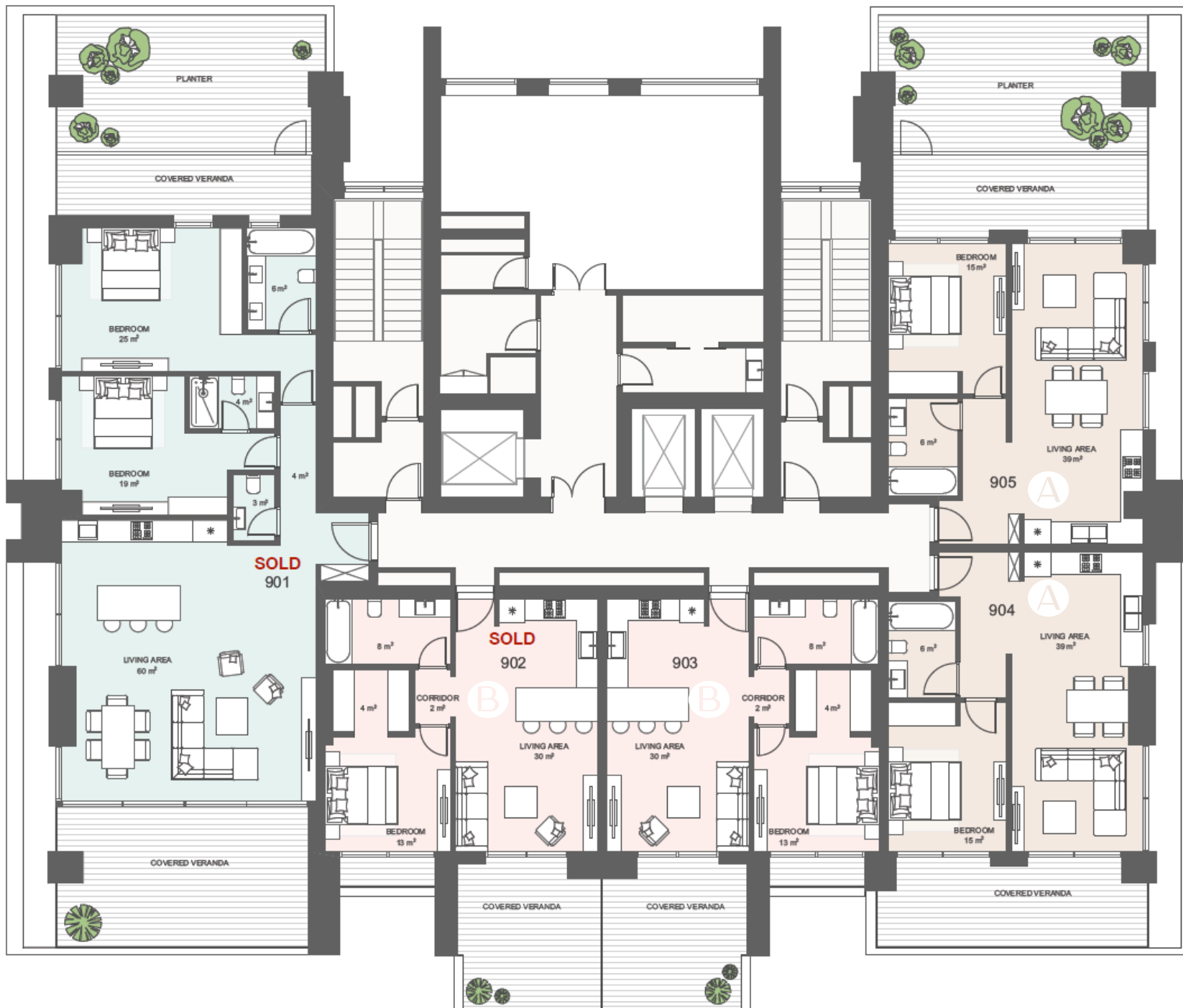
7	Parking entrance
8	Tennis court
9	Playground

10	BBQ area
11	Outdoor lounge
12	Visitors Parking

WELNESS CENTRE

1	Gym
2	Yoga terrace
3	Sun deck
4	Sauna
5	Steam room
6	Indoor pool deck
7	Indoor pool
8	Shower rooms
9	Massage room
10	Female changing room
11	Male changing room
12	Outdoor jacuzzi terrace
13	Pilates Room





TYPE A: 1-BDR APARTMENT

APARTMENT	904
Bedrooms	1
Bathrooms	1
Internal area	60 m ²
Covered veranda	15 m ²
Common Area	52 m ²
No. of verandas	1
Total Covered	75 m ²
Total Gross Area	127 m ²

TYPE B: 1-BDR APARTMENT

APARTMENT	903
Bedrooms	1
Bathrooms	1
Internal area	60 m ²
Covered veranda	15 m ²
Common Area	52 m ²
No. of verandas	1
Total Covered	75 m ²
Total Gross Area	127 m ²

TYPE C1: 2-BDR APARTMENT

APARTMENT	601
Bedrooms	2
Bathrooms	2
Internal area	70 m ²
Covered veranda	38 m ²
Common Area	74 m ²
No. of verandas	1
Total Covered	108 m ²
Total Gross Area	182 m ²

TYPE C2: 2-BDR APARTMENT

APARTMENT	602
Bedrooms	2
Bathrooms	2
Internal area	70 m ²
Covered veranda	9 m ²
Common Area	54 m ²
No. of verandas	1
Total Covered	79 m ²
Total Gross Area	118 m ²





TYPE D: 2-BDR APARTMENT

APARTMENT	1902
Bedrooms	2
Bathrooms	3
Internal Area	114 m ²
Covered Veranda	36 m ²
Common Area	103 m ²
No. of verandas	3
Total Covered Area	150 m ²
Total Gross Area	253 m ²

TYPE E: 2-BDR APARTMENT

APARTMENT	1901
Bedrooms	2
Bathrooms	3
Internal Area	121 m ²
Covered Veranda	36 m ²
Common Area	108 m ²
No. of verandas	1
Total Covered Area	157 m ²
Total Gross Area	265 m ²

TYPE F: 2-BDR APARTMENT

APARTMENT	1801
Bedrooms	2
Bathrooms	2
Internal Area	107 m ²
Covered Veranda	28 m ²
Common Area	93 m ²
No. of verandas	2
Total Covered Area	135 m ²
Total Gross Area	228 m ²

TYPE G: 3-BDR APARTMENT

APARTMENT	1803
Bedrooms	3
Bathrooms	4
Internal Area	148 m ²
Covered Veranda	47 m ²
Common Area	134 m ²
No. of verandas	2
Total Covered Area	195 m ²
Total Gross Area	329 m ²



TYPE K: 1-BDR APARTMENT

APARTMENT	1201
Bedrooms	1
Bathrooms	1
Internal Area	61 m ²
Covered Veranda	9 m ²
Common Area	48 m ²
No. of verandas	1
Total Covered Area	70 m ²
Total Gross Area	118 m ²

TYPE L: 2-BDR APARTMENT

APARTMENT	1202
Bedrooms	2
Bathrooms	2
Internal Area	81 m ²
Covered Veranda	38 m ²
Common Area	82 m ²
No. of verandas	1
Total Covered Area	119 m ²
Total Gross Area	201 m ²



TYPE H: 4-BDR DUPLEX PLUS

APARTMENT	2402
Bedrooms	4
Bathrooms	4
Guest WC	2
Internal Area	274 m ²
Covered veranda	54 m ²
Common Area	103 m ²
No. of verandas	3
Uncovered roof veranda	173 m ²
Total Covered Area	328 m ²
Total Apartment Area	501 m ²



TYPE H: 4-BDR DUPLEX PLUS

LEVEL 2 - 25TH FLOOR



LEVEL 3 - 26TH FLOOR

